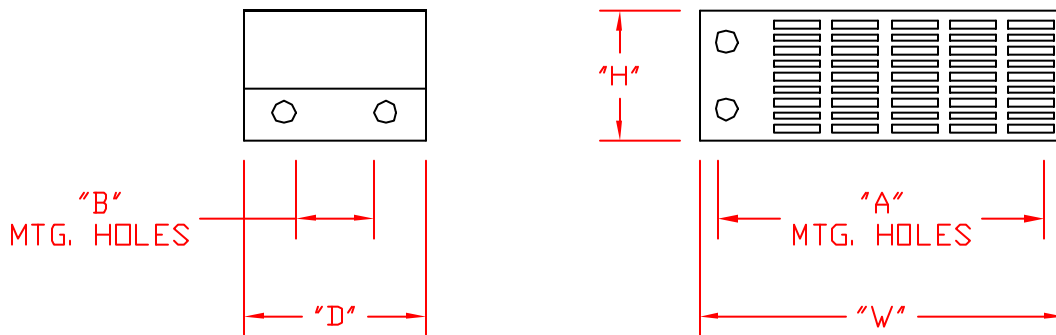


D0 ENCLOSURE



DB ENCLOSURE

ENCLOSURE TYPE	W	D	H	A	B	FDL	EWR/CSW
DB1C	14	4	5	13	-	1	1 SIZE 3
DB2C	14	7	5	12	5	2	2 SIZE 3
DB3C	14	10	5	12	8	3	3 SIZE 3
DB4C	14	13	5	12	11	4	4 SIZE 3
DB6C	21	10	5	19	8	6	3 SIZE 5
DB8C	21	13	5	19	11	8	4 SIZE 5
DB12C	28	13	5	26	11	12	4 SIZE 7
D0-1	29	18	7	27.5	14	18	9 SIZE 4

324 Governor Road • Braeside, Victoria 3195 • AUS  
 Phone: +61 (0)3 9587 4099 • Fax: +61 (0)3 9587 4130  
 www.postgloverasia.com

1369 Cox Avenue • Erlanger, KY 41018 • USA  
 Phone: 800-537-6144 / 859-283-0778 • Fax: 859-283-2978  
 www.postglover.com



Quality System Certified to ISO 9001

Serving the Electrical Industry Since 1892